



Intro

Group

Colorways

Steps 1-4

Part 2

Outcomes

Findings



# Mod 3: Block Printing

By: Cocoa Yamamoto



## Materials

- 1yd of lilac linen
- 1yd of platinum white shirting
- 2 Rubber blocks
- Fabric Paint
- Lino cutter

## Backstory

These are Japanese family crests, one being from the Tachibana clan (top) and Kakitsubata (bottom) usually found on yukatas.



## Group Project

I decided to use an umber brown color to print my elephant horizontally on the second row shown on the left.

## Possibility

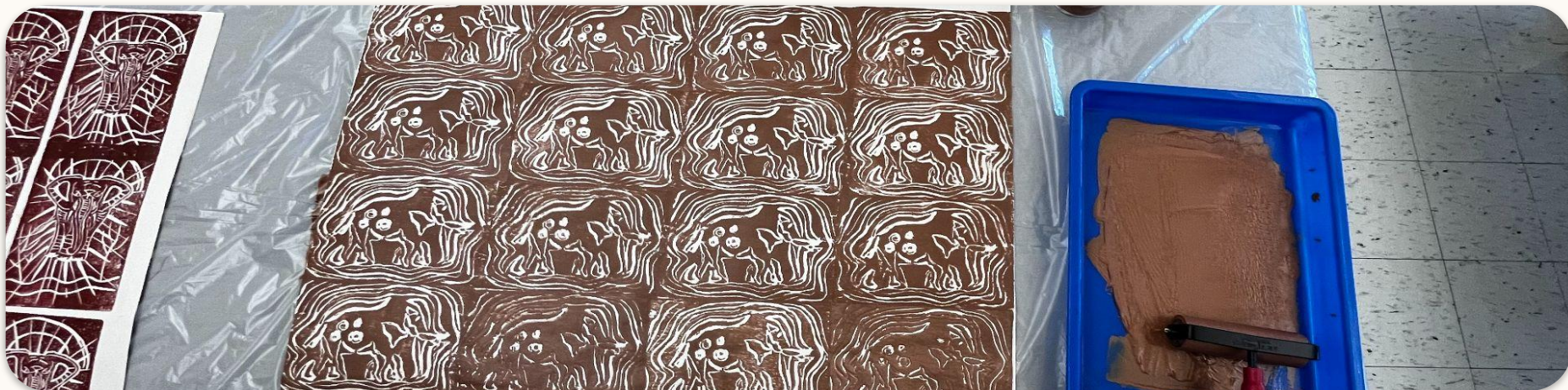
With these fabrics we can make a shirt, scarf, draped dress or even saree-like garment.





# Group Project

Before printing on the fabric, test printing on paper was very helpful to gauge how much ink to use and the techniques to use in order to print the blocks evenly. As you can see in the picture below, there are some elephants that are too inky because there was too much ink on the block.





# Colorways

## **Lilac linen:**

Using a celtic green and silver grey, I wanted to use triadic colors while also keeping it a tranquil feel. This is why instead of orange I added a light grey to make the green pop even more.

## **Platinum white shirting:**

Colors peach orange and aegean blue contrasted with the white background. By using these color they are complementary and so provide a strong distinction compared to the white.





[Intro](#)[Group](#)[Colorways](#)[Steps 1-4](#)[Part 2](#)[Outcomes](#)[Findings](#)

## Step 1

Trace the motif on tracing paper then "print" it on your rubber block to carve it out with the lino cutter.

## Step 2

Lay the linen fabric flat on a padded surface to pin down tightly on all sides.

## Step 3

Decide what colorway to use then choose the layout. For this project, I decided to use both half-brick repeat and tossed repeat.

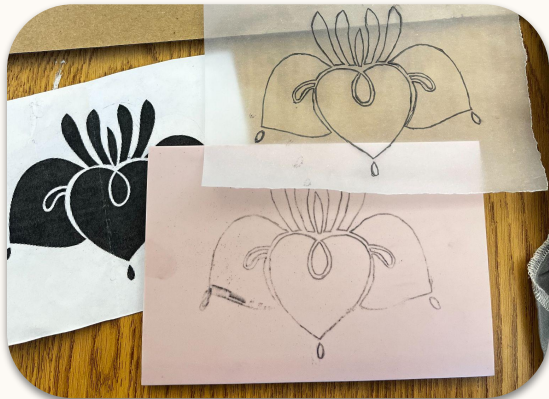
## Step 4

Pour out a good amount of paint on the roller and roll onto the block evenly to then press down firmly.

[Intro](#)[Group](#)[Colorways](#)[Steps 1-4](#)[Part 2](#)[Outcomes](#)[Findings](#)

## Same Methods

Using the platinum white shirting, repeat steps 2-4. Measure out the spacing according to half-brick repeat pattern.



[Intro](#)[Group](#)[Colorways](#)[Steps 1-4](#)[Part 2](#)[Outcomes](#)[Findings](#)

# Outcomes



## Final Product: Lilac Linen

The combination of tossed repeat and half-brick repeat using colors celtic green and silver grey.

## Final Product

Half-brick repeat leaving more of the background space for simplicity, using colors peach orange and aegean blue.





# Findings & Conclusion

## Findings:

There were some challenges I ran into for almost every step of the process. For example, when carving the blocks, I found it difficult to carve out the really thin lines deep enough because my lino cutter was not precise or sharp enough to get into the little areas, so I ended up using a scalpel.

The other conflict I encountered was when printing my first linen fabric, I realized I spaced the motifs too close together in the first row and so I did not have enough space to clearly use the half-brick pattern in the second row. I had to improvise and use the tossed repeat pattern as well.



## Conclusion

All in all, through every adversity, the motifs printed nicely for the most part and the colors complemented each other creating an unique print.